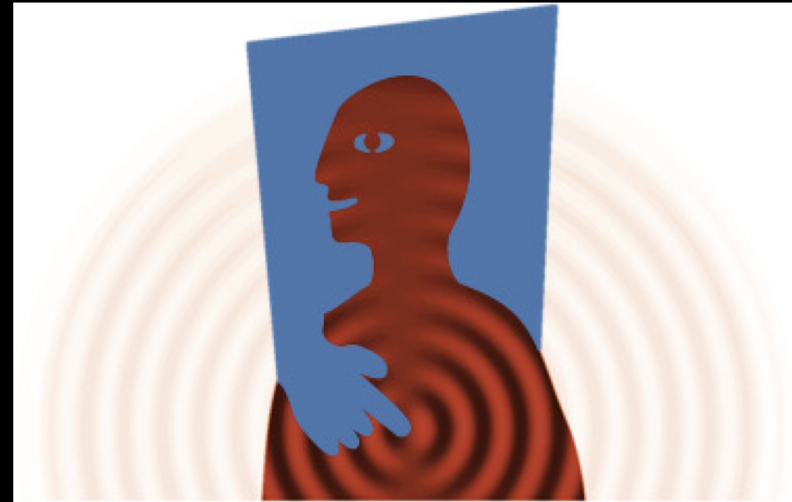


INTRODUCTION TO A PHENOMENOLOGY OF PERCEPTION IN OSTEOPATHIC THEORY AND PRACTICE

Experiencing the Embodied Mind
Emmanuel Roche D.O

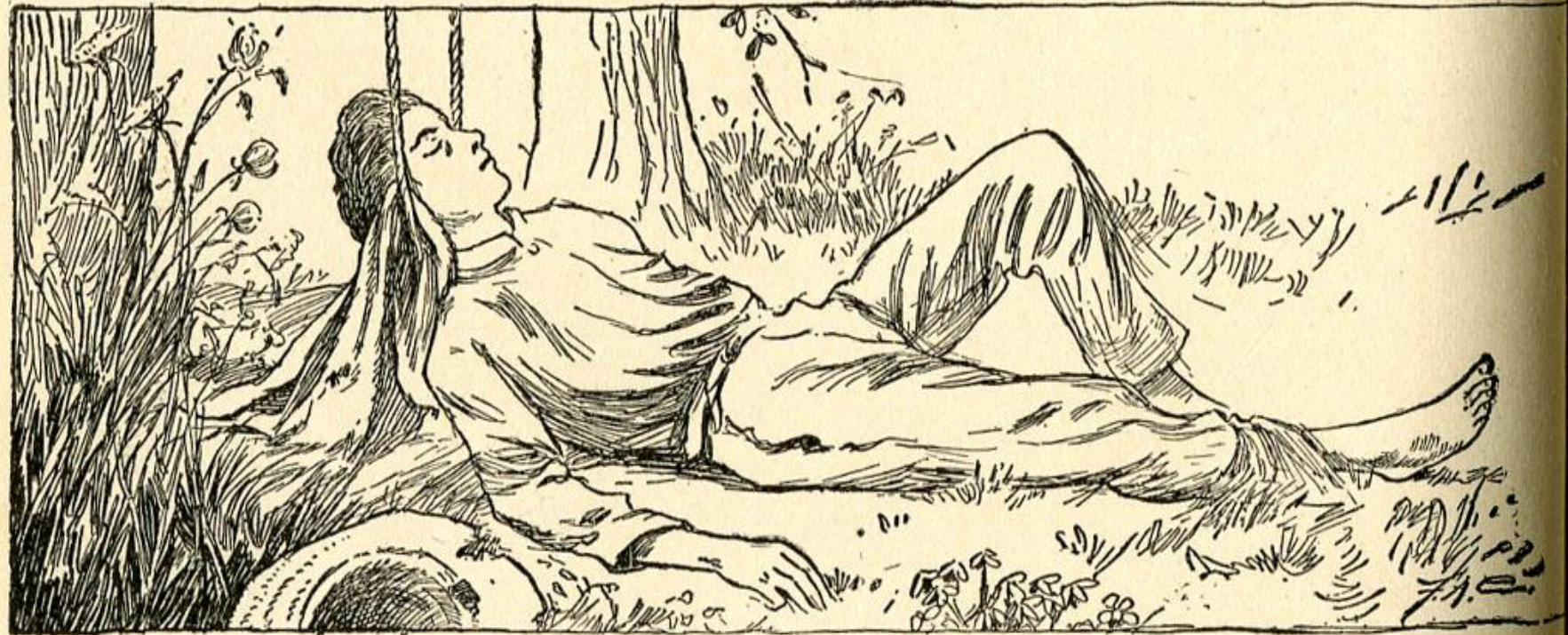


EMBODIED MIND PROJECT

Monday 7 – Saturday 12 October 2013 Gargonza ,Tuscany, ITALY

AT STILL 1928-1917

First lesson in osteopathy !



FIRST LESSON IN OSTEOPATHY.

As in Alexander technique , Osteopathy began with a lesson !

OSTEOPATHY ?



Andrew Taylor STILL 1928-
1917

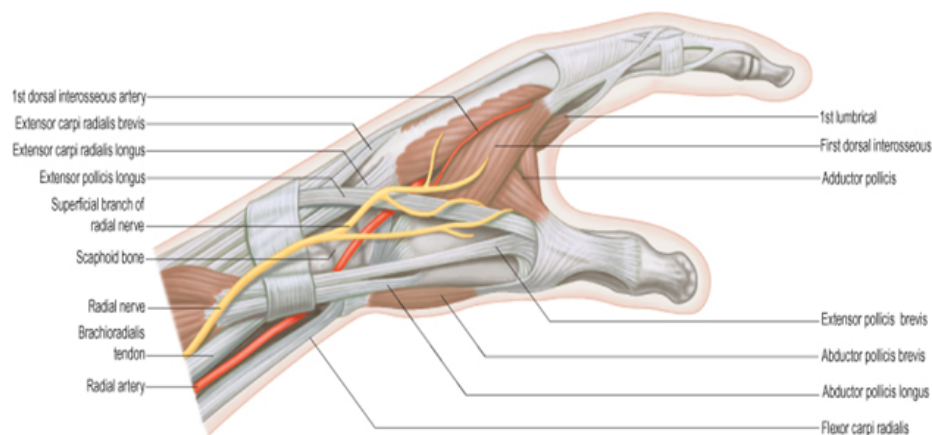
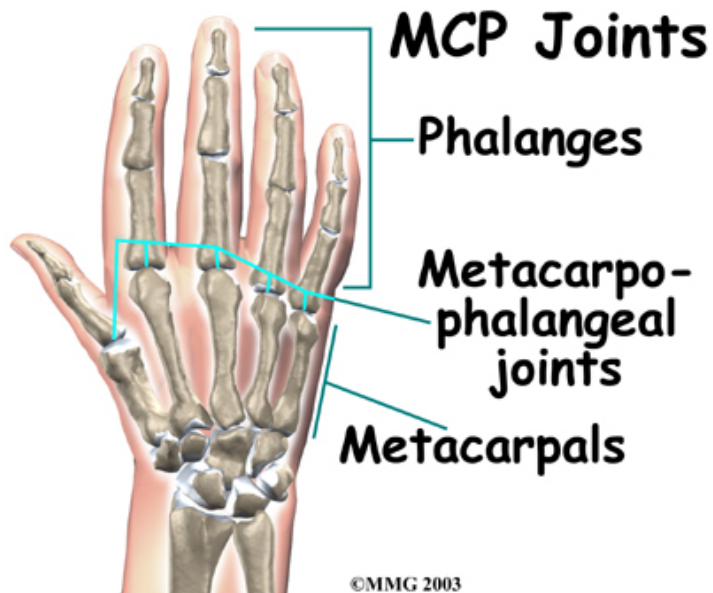
- *« Osteopathy is a science which teaches that the human body is capable of producing within itself all substances necessary for the building and repairing of human tissues, provided there is no mechanical interference with the circulatory or nervous systems. Correction of such mechanical interference permits a free flow of forces and nourishment between the parts, which restores normal tissues and re-establishes the harmony of conditions and action know as health. » M.*

A. LANE Professor of Pathology in American School of Osteopathy at Kirksville, Doctor Still As a therapist , Osteopathic health , chicago ,December 1916, Number 6

PERCEPTUAL ODYSSEY

- Over the course of their professional career, osteopaths perform a genuine perceptual journey during which they explore and deepen step by step, their expertise and their ability to communicate with the living body and help restore their patient's Health of his patient by "*Correction of ...mechanicals interferences*".

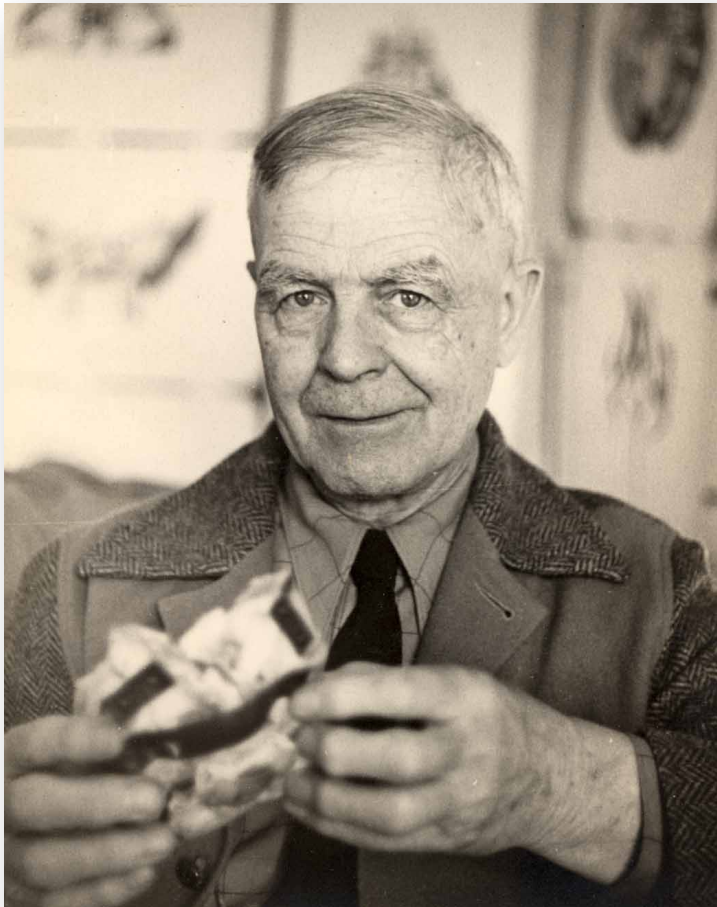
FROM SENSATION TO PERCEPTION



© Elsevier Ltd 2005. Standing: Gray's Anatomy 39e - www.graysanatomyonline.com

- First trained in biomechanics, they develop a palpatory sense that allows them to apprehend and treat the imbalances in the human body with manipulations and mobilisations.
- Lab 1 mobility test of index P1
- Later on, addressing osteopathy in the cranial field, they will discover, beyond the physical senses, the ability to listen, see, feel and have a “knowing touch” that enables them to work more deeply and efficiently with the natural healing forces of the human body.
- Lab 2 listening test of index P1
- Lab 3 Visualizing test of index P1

WG SUTHERLAND 1873-1954



- *« By knowing , I mean not information gained by physical senses but a knowledge that comes from getting as far as one can from the physical sense . So , along the way I have been searching here and there . »WG Sutherland in Contributions of thought final lecture 25 april 1948 p 210 Rudra Press*

EMPATHY



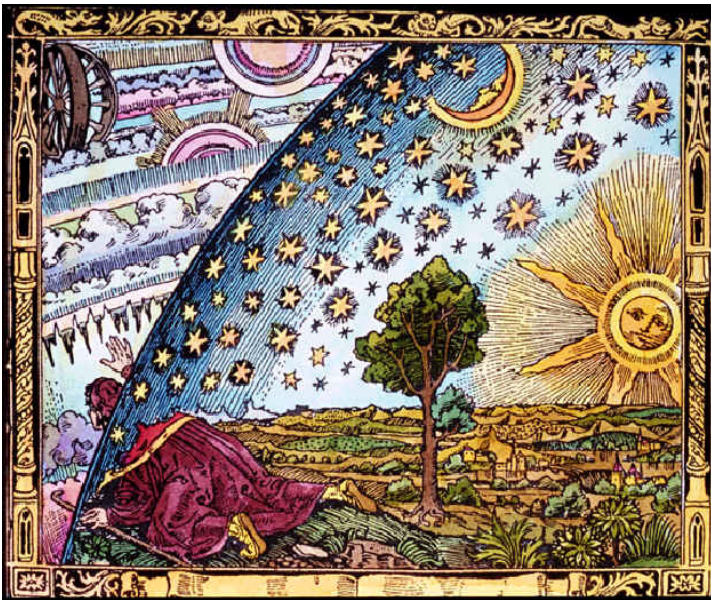
E HUSSERL 1859-1938

- Once in a state of empathic “corporal communication”, osteopaths can go as far as perceiving, more or less consciously and as an echo of their own, their patient’s corporal structure on themselves.
- Einfühlung and Kinesthese (Husserl 1907)
- Body analyser concept (cosnier 1994)
- Neurons mirrors (Rizzolatti, G et Al 1996)

Division of attention

- Dividing their attention between the anatomical object they explore and their own perceptual knowledge, between the whole and the part, they create an internal receptive space capable of sensitive intelligence.
- The attentive observation of the reactions and variations of their internal perceptual sensitive continuum is the essential organ of perception for osteopaths, their compass.

MENTAL IMAGES



- The symbolic function, quality and form of mental images invoked and offered to the living body seem to allow us to act in harmony and communicate on a relatively deep level with the patient's body, its anatomy, functions, rhythm and space.

IMAGINATION

- *« In childhood days, we frequently demonstrated use of a lively faculty which was ours, the ability to stretch our imagination. The Creator of the Universe had Imagination – imagination with a capital « I ». Without it, no Universe would have been created. I ask you now to make use of this faculty »* WG SUTHERLAND

WG SUTHERLAND



- « *The construction of a mental picture might help you in the recognition of the feel of the movement of the hemispheres. A way of doing this is to crawl inside the cranium mentally and assume a reserved seat on the foramen magnum and thus have a position for visualizing the activity as well as feeling it . **One of the fundamental keys to diagnosis and technique is a ability to get within the cranium mentally and visualize all activities going on. »***

WG SUTHERLAND *Contribution Of Thought* edited by Adah Strand
Sutherland and Anne L.Wales D.O second Edition SCTF inc 1998
Rudra Press p143

THE SILENT PARTNER



Dr Rollin BECKER D.O
1910-1996



Dr James JEALOUS

- Further along their progression, through their conscious perception, osteopaths can discover the existence of an intelligent presence hidden behind the body's mechanism.
- This silent partner can then become a genuine, active interlocutor and, as is the case in all communication, the quality of the response will depend on the shape and clarity of the query.

OSTEOPATHS EXPERIMENT AND DEEPEN THEIR CONSCIOUS PERCEPTION BY PASSING SUCCESSIVELY 3 MODELS

- A model dominated by the perception of sensible form(Bio-mechanic model, Osteopathic Manual Technique)
- Then by the “imaginal” form(vitalist model, Osteopathy in Cranial Field)
- And finally a model opening perception to intelligible form and beyond(biodynamic model).

BE STILL AND KNOW (Psalm 46)



- *« It has been my endeavour to get as far away from the physical senses as I possibly could, that is, to a point where one begins to experience, to realize, "Be Still and Know" »*

WG Sutherland in Contributions of thought p210 Rudra Press

- Epochè

STILLNESS Lab 4



- Listen to the space around you into the room. Find the most quiet, the most silent and motionless place in this space.
- Feel your relation with this Stillness.